

# GSM PETA

## Data Sheet

---

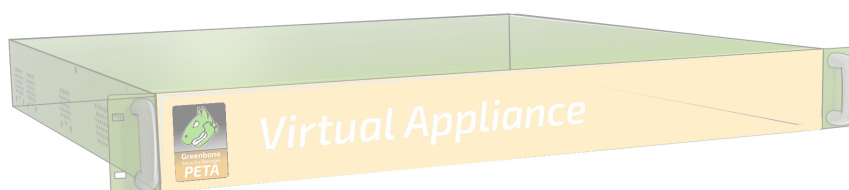


**Greenbone**  
Sustainable Resilience

The **Greenbone Security Manager (GSM)** is a Vulnerability Management Solution that seamlessly and transparently integrates into your security and GRC strategy, providing vulnerability assessment, vulnerability intelligence and threat management capabilities. Identifying breaches of corporate security policy and regulations is covered as well.

With a strong focus on 3rd party integration and open standards, the GSM is a best of breed security solution that enhances and supplements your security posture and allows a proactive approach to automated Vulnerability Life Cycle Management.

The **GSM PETA** controls sensors for up to 12 security zones and covers up to 9,000 IP addresses. The operational area is large enterprise IT.



## Benefits

- Turn-key solution: operational within 10 minutes
- Powerful appliance operating system Greenbone OS with command line administration bases on a comprehensive security design
- Integrates the Greenbone Security Feed with over 69,900 Vulnerability Tests, automatically updated daily with the newest threat detection routines
- Integrated Backup, Restore, Snapshot and GOS-Upgrade
- Integrated Greenbone Security Assistant as central web interface
- No limitation on number of target IP addresses (effective number depends on scan pattern and scanned systems)
- Flat-rate subscription includes the Platinum Support package, the Greenbone Security Feed and feature updates

## Specifications

### Virtual Appliance Format

The following Hypervisor are supported:

- VMware ESXi

### Appliance Details

- 64 bit Linux OS
- 8 vCPUs
- 16 GB RAM
- 140 GB HDD Storage

### Connectivity

- 8 virtual Ethernet Ports

### Solution Elements

- Virtual Appliance
- 1, 3 or 5 years access to the Greenbone Platinum Support

# GSM PETA

## Data Sheet



**Greenbone**  
Sustainable Resilience

### Supported Standards

- Network integration: SMTPS (Email), SNMP, SysLog, LDAP, RADIUS, NTP, DHCP, IPv4/IPv6
- Vulnerability detection: CVE, CPE, CVSS, OVAL
- Network scans: WMI, LDAP, HTTP, SMB, SSH, TCP, UDP, etc.
- Policies: Baseline security, PCI-DSS, ISO 27001

### Web-based interface (HTTPS)

- Scan tasks management with notes and false-positives marking
- Multi-user support
- Clustered and distributed scanning via master-sensor mode
- Report browsing aided by filtering, sorting, annotating and risk scoring
- Plugin framework for reports: XML, PDF, etc.
- Appliance performance overview

### Integration (API)

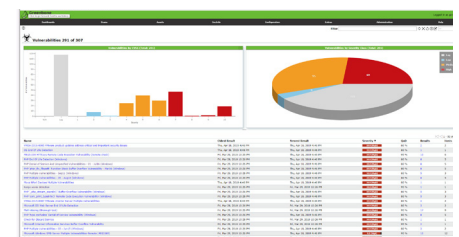
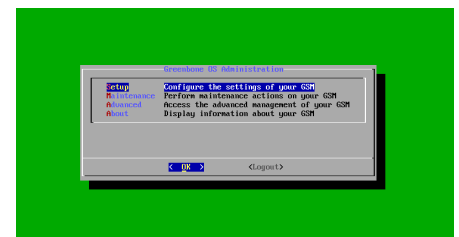
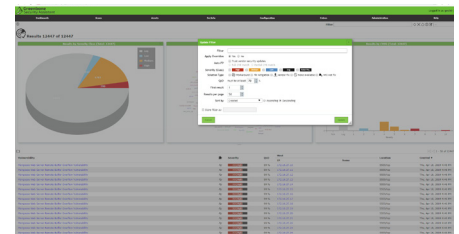
- Greenbone Management Protocol (GMP), secured
- All user actions of web-based interface available via API
- Easy integration with other applications using the API
- Simple automation via command line tools

### Administration Console Interface

- Network integration and configuration
- Backup, restore, snapshot, factory reset, upgrade

### Scan-Application

- Scan Engine and Framework: Greenbone Vulnerability Manager (GVM) with integrated Greenbone Security Feed (GSF)
- Additional scan tools



Your Greenbone Security Solutions Partner:

**Greenbone Networks GmbH**  
Neumarkt 12  
49074 Osnabrück  
Germany

Office: +49-541-760278-0  
Fax: +49-541-760278-90  
Email: [sales@greenbone.net](mailto:sales@greenbone.net)  
Web: [www.greenbone.net](http://www.greenbone.net)