

GSM 25V

Data Sheet

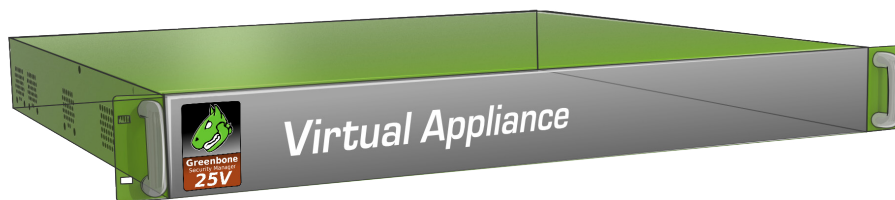


Greenbone
Sustainable Resilience

The **Greenbone Security Manager (GSM)** is a Vulnerability Management Solution that integrates seamlessly and transparently into your Security and GRC strategy, providing Vulnerability Assessment, Vulnerability Intelligence and Threat Management capabilities. Identifying breaches of corporate security policy and regulations is covered as well.

With a strong focus on 3rd party integration and open standards, the GSM is a best of breed security solution that enhances and supplements your security posture and allows a proactive approach to automated Vulnerability Life Cycle Management.

The **GSM 25V** acts as a scan sensor for the Greenbone Security Manager from GSM 400 and covers up to 300 IP addresses. The operational areas are small branch offices.



Benefits

- Turn-key solution: operational within 10 minutes
- Powerful appliance operating system Greenbone OS with command line administration based on a comprehensive security design
- Integrates the Greenbone Security Feed with over 68,000 Vulnerability Tests that are automatically updated with the newest threat detections routines daily
- Integrated GOS-Upgrade
- No limitation on number of target IP addresses (effective number depends on scan pattern and scanned systems)
- Flat rate subscription includes the Platinum Support package, the Greenbone Security Feed and feature updates

Specifications

Virtual Appliance Format

The following Hypervisors are supported:

- VMware

Appliance Details

- 64 bit Linux OS
- 2 vCPUs
- 4 GB RAM
- 18 GB HDD Storage

Connectivity

- 4 virtual Ethernet Ports

Solution Elements

- Virtual Appliance
- 1, 3 or 5 years access to the Greenbone Platinum Support

GSM 25V

Data Sheet



Greenbone
Sustainable Resilience

Supported Standards

- Network integration: SMTP (e-mail), SNMP, SysLog, LDAP, NTP, DHCP, IPv4/IPv6
- Vulnerability detection: CVE, CPE, CVSS, OVAL
- Network scans: WMI, LDAP, HTTP, SMB, SSH, TCP, UDP, etc.
- Policies: IT baseline security, PCI-DSS, ISO 27001

Management via Web-Based Interface (HTTPS) of the Master

- Scan tasks management with notes and false-positive marking
- Multi-user support
- Clustered and distributed scanning via sensor mode
- Report browsing aided by filtering, sorting, annotating and risk scoring
- Plugin framework for reports: XML, PDF, ...
- Appliance performance overview

Integration/API

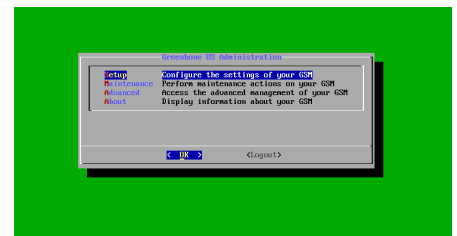
- Greenbone Management Protocol (GMP), secured
- All user actions of the web-based interface available via API
- Easy integration with other applications using the API
- Simple automation via command line tools

Administration Console Interface

- Available as Shell via SSHv2
- Network integration configuration
- Backup, restore, upgrade

Scan-Application

- Scan engine and framework: Greenbone Vulnerability Manager (GVM) with integrated Greenbone Security Feed



Your Greenbone Security Solutions Partner:

Greenbone Networks GmbH
Neumarkt 12
49074 Osnabrück
Germany

Office: +49-541-760278-0
Fax: +49-541-760278-90
Email: sales@greenbone.net
Web: www.greenbone.net

20190426